

CHILD PROTECTION & SAFEGUARDING

Summary of Child Protection Information for Visitors and Volunteers

Our school is committed to the highest standards in protecting and safeguarding the children entrusted to our care.

Our school will support all children by:

- **Promoting a caring , safe and positive environment**
- **Encouraging self-esteem and self-assertiveness**
- **Effectively tackling bullying and harassment**

We recognise that some children may be the victims of neglect, physical, sexual or emotional abuse. Staff working with children are well placed to identify such abuse.

At our school in order to protect our children, we aim to:

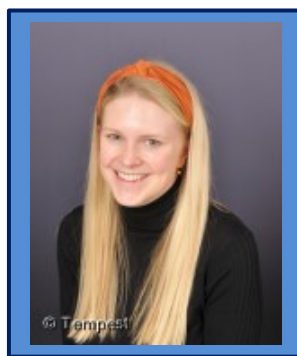
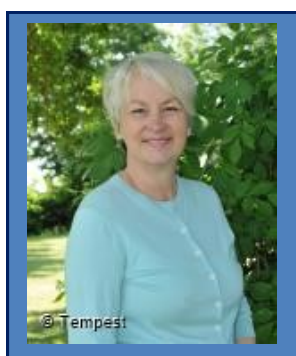
- **Create an atmosphere where all our children feel secure, valued and listened to**
- **Recognise signs and symptoms of abuse**
- **Respond quickly, appropriately and effectively to cases of suspected abuse**

If you have a concern that a child is being harmed, is at risk of harm, or you receive a disclosure (intentionally or unintentionally) you must contact the following staff member as quickly as possible

Lead DSL: ***Sarah Whitehead***

Deputy DSLs: ***Hannah Stonehill***

Rachel Smithson



Everyone working with our children, their parents and carers should be aware that their role is to:

- **Listen** and note carefully any observations which could indicate abuse
- Not to attempt to investigate once the initial concern is raised
- **Refer** to the Designated Senior Lead (DSL) immediately
- Contact the Head or the Deputy DSP if the DSP is not available
- **Remember** disclosures of abuse or harm from children may be made at any time

If anything worries you or concerns you, report it straight away

